



## Gestione integrata degli incidenti di sicurezza

**Alessio Pennasilico**, CS Clusit

**Gianluca Marianecchi**, Head of Presales BLUDIS

14:50 - 15:30 – 19 giugno 2024

# Alessio Pennasilico

Partner, Practice Leader Information & Cyber Security Advisory Team  
Security Evangelist & Ethical Hacker

P4I



Membro del Comitato Scientifico



Membro del Comitato Direttivo di Informatici Professionisti



Vice Presidente del Comitato di Salvaguardia per l'Imparzialità



Membro del Comitato di schema



Direttore Scientifico della testata



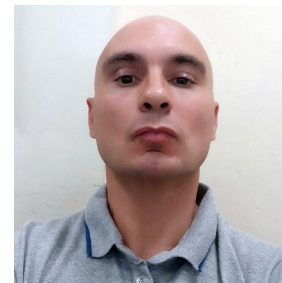
Senior Advisor dell'Osservatorio Cyber Security & Data Protection del Politecnico di Milano



# Gianluca Marianecchi

## Head of Presales BLUDIS

Gianluca Marianecchi è Responsabile del Team di Prevendita in Bludis. Già specialista in prodotti di Identity, si occupa di coordinare un gruppo di 9 esperti, ognuno dei quali con conoscenze specifiche su temi come IT Service Management, Unified Endpoint Management, Security e Communication.



**BLUDIS**  
VALUE ADDED DISTRIBUTOR

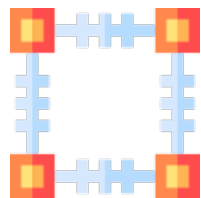
# Le sfide odierne

Difendere la propria infrastruttura dagli attacchi informatici è fondamentale per qualsiasi organizzazione.

Protezione degli endpoint, controllo della loro postura di sicurezza, controllo degli accessi standard e di quelli privilegiati, notifica in tempo reale di tutte le attività svolte sui sistemi critici, con un sistema di repository dei log da loro provenienti, sono solo alcuni dei requisiti necessari che devono essere coperti per ridurre e controllare il più possibile la superficie di attacco alla quale si è esposti.

Grazie a ManageEngine è possibile farlo, utilizzando diverse soluzioni le quali, essendo concepite con lo stesso framework, possono essere integrate tra loro in maniera estremamente semplice ed efficace.

# ASSET



Conoscenza  
del perimetro



Monitoraggio  
delle prestazioni



Analisi delle  
vulnerabilità



Patch  
Management

# LOG MANAGEMENT



Rilevazione



Prioritizzazione

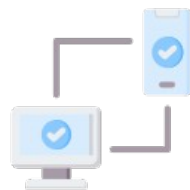


Analisi

# IAM



Single  
Sign On



Multi Factor  
Authentication



Provisioning Automatico

# PAM



Accesso  
Pre autorizzato



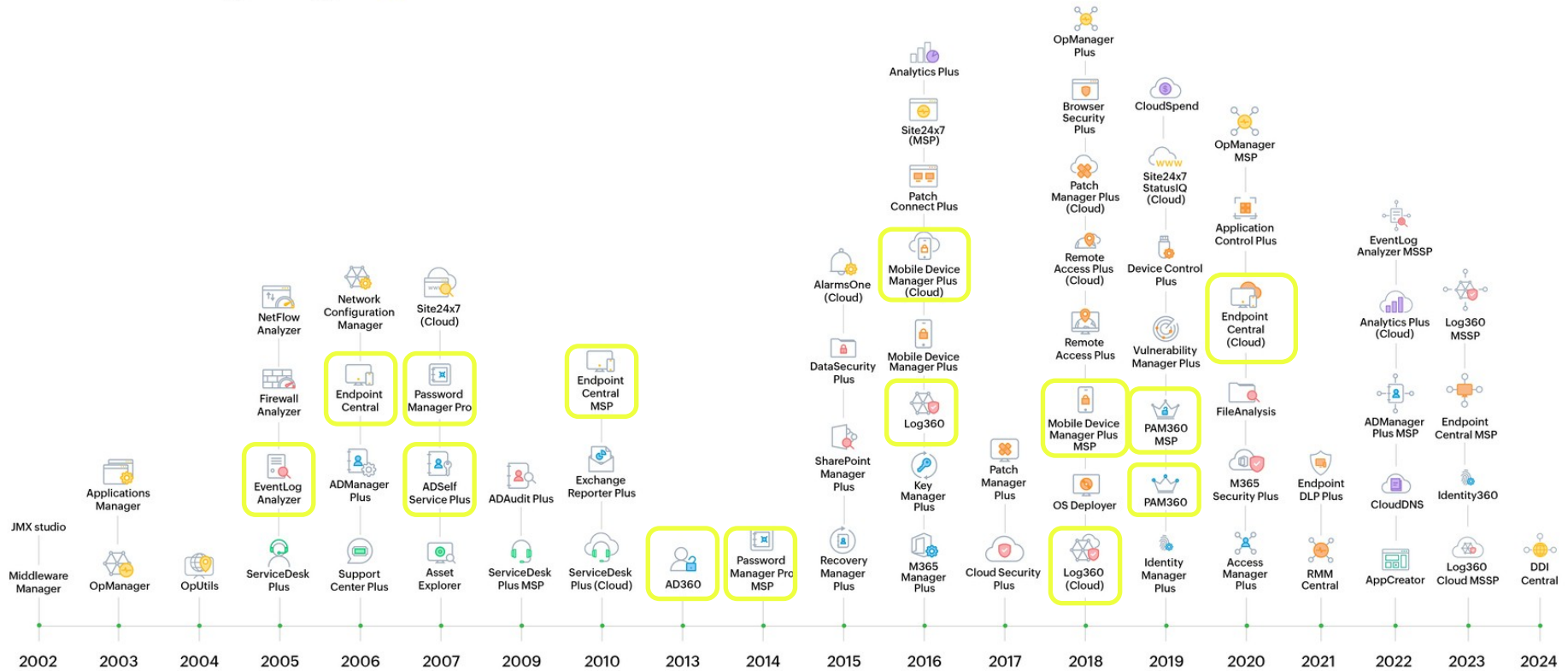
Least  
Privilege



Password Vaulting &  
randomization



# ManageEngine



# Take control of your IT



**Monitor, manage and secure your digital enterprise with ManageEngine**

**Available for**  
Enterprise IT | Managed service providers (MSPs)  
**as**  
Self-hosted on-premises  
Self-hosted in public cloud (AWS, Azure)  
Zoho Cloud-native

## Unified service management

- Enterprise and IT service management platform
- Single-touch workflow automation for IT and business processes
- Custom workflows and lifecycle management for key ITSM practices
- AI-powered virtual assistant and conversational agent
- Best practice ITSM framework implementation
- IT asset management with a CMDB
- Single enterprise service portal for all departments
- Advanced reporting dashboards and analytics

## Identity and access management

- Identity governance and administration
- Privileged identity and access management
- AD and Azure AD management and auditing
- SSO for on-premises and cloud apps, with MFA
- Password self-service and sync
- Microsoft 365 and Exchange management and auditing
- AD and Exchange backup and recovery
- SSH and SSL certificate management

## IT operations management

- Full-stack observability
- Artificial Intelligence-powered IT operations (AIOps)
- End-user experience monitoring
- Application performance monitoring
- Cloud and Infrastructure monitoring
- Network performance monitoring
- Network traffic and bandwidth analysis
- Network security and automation
- Network change, configuration, and compliance management
- DNS, IP address, and switch port management

## Unified endpoint management and security

- Desktop, server, and mobile device management
- OS and software deployment
- Automated patch management
- Continuous vulnerability assessment and remediation
- Web and data security
- Endpoint privilege management
- Next-generation antivirus
- Endpoint analytics and telemetry
- Remote monitoring and management

## Security information and event management

- Unified SIEM for cloud and on-premises
- ML-driven user and entity behavior analytics
- Advanced threat analytics
- Cloud access security broker
- Data leak prevention and risk assessment
- Regulatory and privacy compliance

## Advanced IT analytics

- Unified insights into all of IT
- AI-driven, self-service advanced analytics
- Pre-built contextual reports and dashboards for 200+ IT apps
- Automatic report creation through an analytics assistant
- Business outcome simulations and predictions
- Comprehensive SaaS management

## Low-code app development

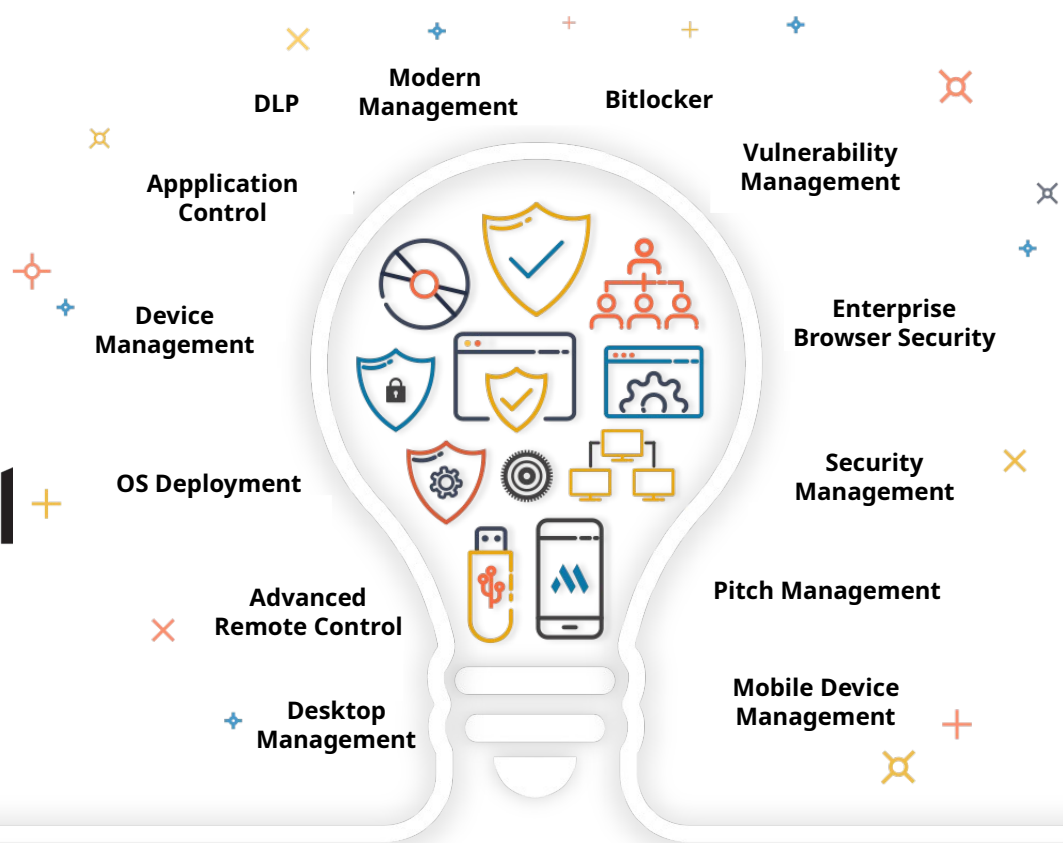
- Custom solution builder
- Digital transformation
- Citizen development
- Business and IT process management
- Rebranded mobile apps
- Enhance ManageEngine solutions

# ManageEngine AD360



## AD SOLUTIONS

# ManageEngine Endpoint Central

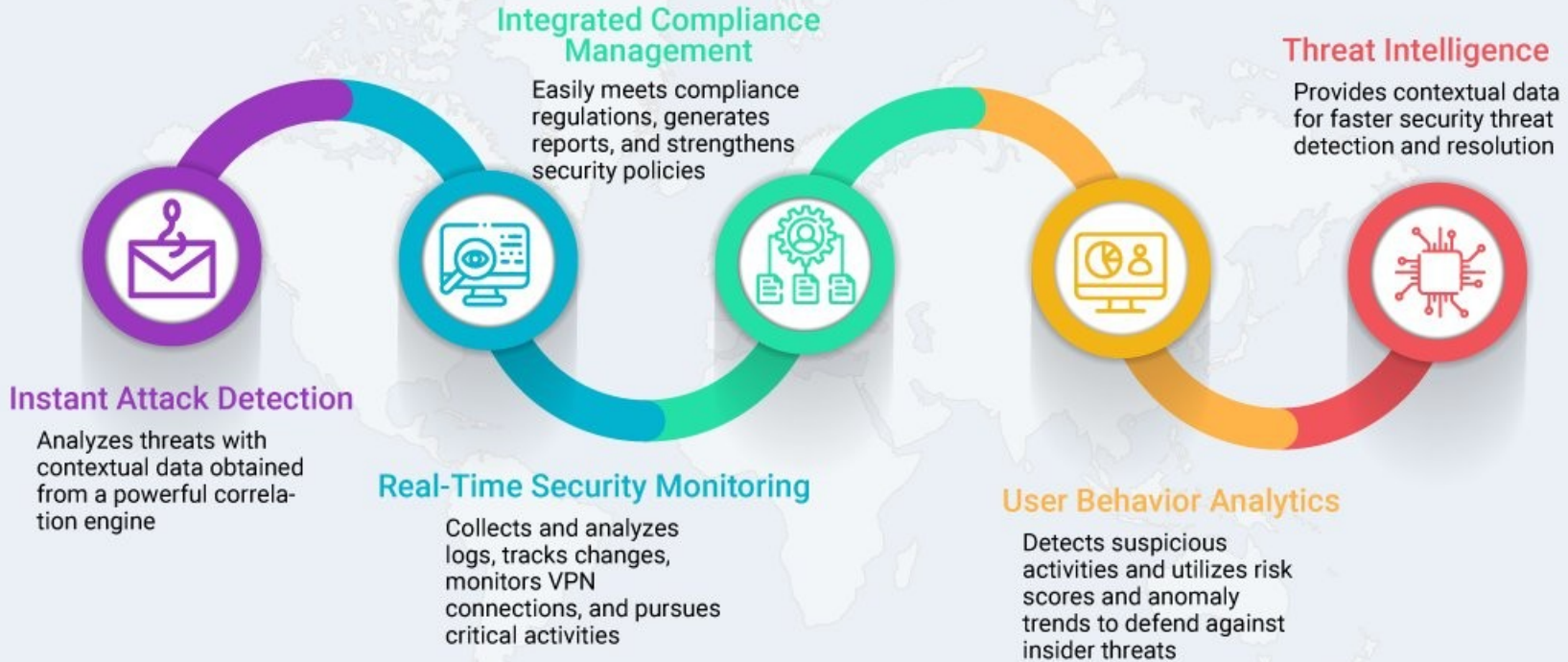


## UEM SOLUTIONS

-  **Privileged account management**  
Account discovery, vaulting & access governance
-  **Secure remote access provisioning**
-  **Privileged session monitoring**
-  **Just-In-time privilege elevation**
-  **User behavior analytics**
-  **SSH key management**
-  **DevOps and cloud security**
-  **SSL / TLS certificate management**
-  **Comprehensive auditing and reporting**



# ManageEngine Log360



# Q&A

# Security Summit

Roma, 19 giugno 2024



## Contatti

[Gianluca.Marianecci@bludis.it](mailto:Gianluca.Marianecci@bludis.it)